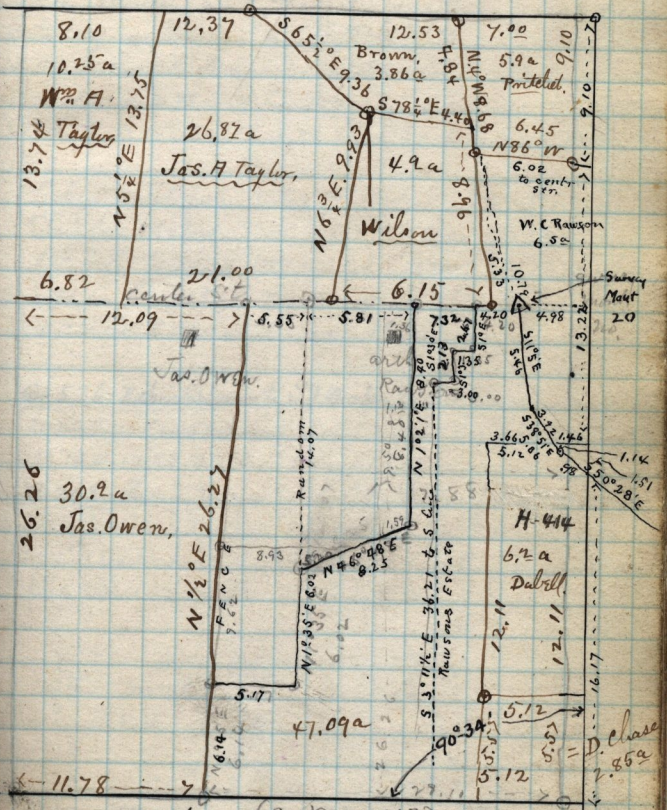


✓ N.W. 1/4 Sec. 1. T. 6 N. R. 2. W.

Daniel B. Rawson Patentee.

See Atlas Sheet No 22 (C)



(See page 143)

J-350-

D.B. Rawson to Wm D. Pritchett, Mar 18-1873-Pl-NW 1/4 Sec. 1.  
 Orig. 40.00 ch N. of S.E. cor. S. 9.10 ch, N 86° W, 6.45 ch,  
 N 4° W 8.68 ch, E. 7.00 ch to lrg. 5.9a